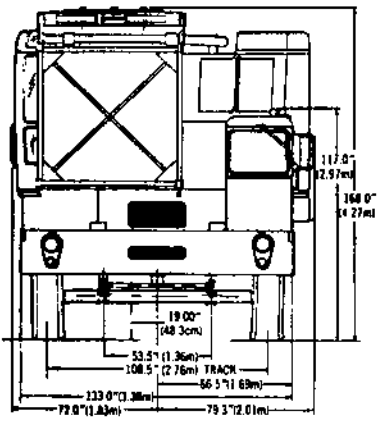
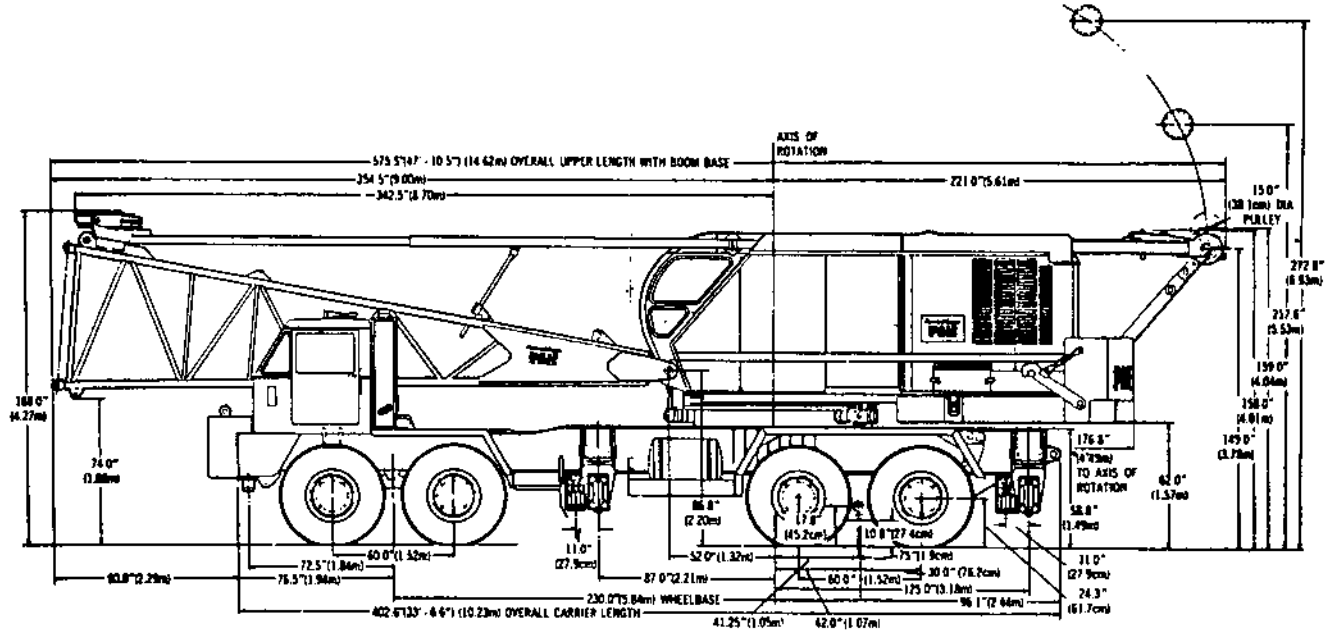
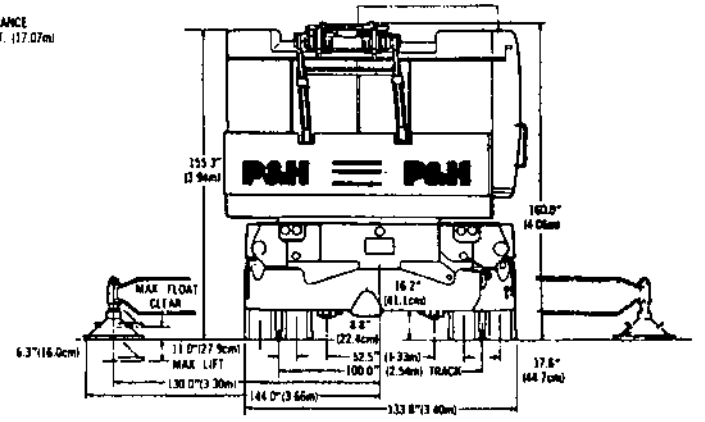


# P&H® 9125-TC

**140-ton Truck Crane**  
**270' boom, 60' jib**

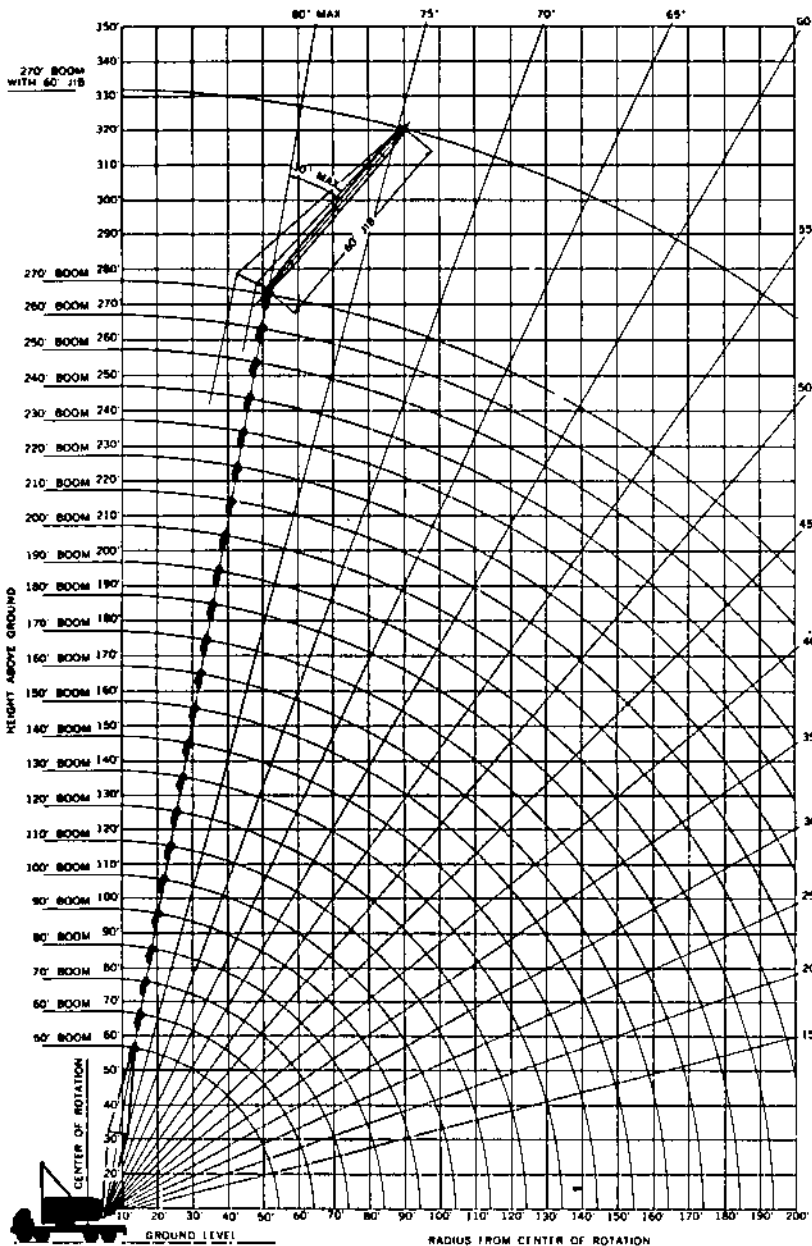


TURNING CLEARANCE  
 RADIUS - 56.0 FT. (17.07m)  
 8105/201



# P&H® 9125-TC

## 140-ton Truck Crane 270' boom, 60' jib



2.2' (APPROX)  
2, 3 & 5 PARTS  
HOIST LINE



5.2' (APPROX)  
2 & 3 PARTS  
HOIST LINE



3.3' 39\"/>

Your versatile P & H 9125-TC adapts readily to your special operating needs through a choice of counterweights and boom tips. This brochure contains these crane rating charts:

### Heavy and Light Duty Tapered Tip Boom:

- 41,000 lbs. counterweight — on outriggers  
50 to 250 foot boom lengths
- 41,000 lbs. counterweight — on rubber  
50 to 130 foot boom lengths
- 41,000 lbs. counterweight plus 14,000 lbs.  
front bumper counterweight — special  
over-rear on rubber — for "tilt-up" work  
50 to 100 foot boom lengths
- 62,000 lbs. counterweight — on outriggers  
50 to 270 foot boom lengths
- 62,000 lbs. counterweight plus 14,000 lbs.  
front bumper counterweight — over-rear  
only — on outriggers — for heavy rigging  
50 to 180 foot boom lengths

### Special Container Tip Boom:

- 62,000 lbs. counterweight — on outriggers  
120 to 160 foot boom lengths

### Hammerhead Tip Boom:

- 41,000 lbs. counterweight — on outriggers  
40 to 180 foot boom lengths
- 62,000 lbs. counterweight — on outriggers  
40 to 180 foot boom lengths
- 41,000 lbs. counterweight — on rubber  
40 to 130 foot boom lengths

### Jib Ratings

All boom combinations except container

**Standard  
69" wide x 69" deep  
Boom**

**crane lifting capacities  
working ranges**

# P&H 9125-TC 140-ton Truck Crane 270' boom, 60' jib

## PCSA CLASS 12-613

1 rated crane loads in pounds — main boom (69" w. x 69" d.) in over side . . . . .

Oper. Rtd. Ft.	50 Ft. Boom			60 Ft. Boom			70 Ft. Boom			80 Ft. Boom			90 Ft. Boom			100 Ft. Boom			110 Ft. Boom			120 Ft. Boom				
	Angle	Boom Pt. El.	Rating Lbs.	Angle	Boom Pt. El.	Rating Lbs.	Angle	Boom Pt. El.	Rating Lbs.	Angle	Boom Pt. El.	Rating Lbs.	Angle	Boom Pt. El.	Rating Lbs.	Angle	Boom Pt. El.	Rating Lbs.	Angle	Boom Pt. El.	Rating Lbs.	Angle	Boom Pt. El.	Rating Lbs.		
12	81	58.0	280,000																							
15	78	57.5	210,500	80	67.6	196,000	RATINGS ABOVE HEAVY LINE ARE LIMITED BY FACTORS OTHER THAN STABILITY.										RATINGS AT 20 FT. OPERATING RADIUS OR LESS REQUIRES THE USE OF 25 FT. TIP SECTION WITH 6 SHEAVES.									
20	72	56.2	165,200	75	66.6	164,900	77	78.8	164,600																	
25	66	54.3	127,000	70	65.1	127,300	73	75.6	127,300	75	85.8	127,200	77	96.3	127,100	78	106.6	127,000								
30	60	52.0	94,200	65	63.1	94,500	69	74.1	94,400	71	84.2	94,300	73	94.6	94,100	75	104.2	94,000	77	116.7	93,800	78	126.0	93,600		
35	53	48.6	74,500	59	60.1	74,800	64	71.6	74,700	67	82.2	74,600	70	93.1	74,400	72	103.8	74,200	74	114.4	74,000	75	124.4	73,800		
40	45	44.0	61,300	54	57.1	61,600	59	68.6	61,400	64	80.6	61,300	67	91.5	61,100	69	102.1	60,900	71	112.6	60,700	73	123.4	60,400		
45	36	37.0	51,800	47	52.5	52,200	55	66.0	52,000	59	77.2	51,900	63	88.8	51,700	66	100.1	51,500	68	110.6	51,300	70	121.4	51,100		
50	24	28.0	44,600	40	48.2	44,900	49	61.4	44,700	55	74.1	44,600	60	86.6	44,400	63	97.7	44,200	65	108.3	44,000	68	120.0	43,700		
60				22	30.9	34,900	37	50.6	34,600	48	66.1	34,500	52	79.6	34,300	56	91.5	34,100	60	104.0	33,800	62	114.6	33,600		
70							20	33.4	28,000	35	54.4	27,800	43	70.0	27,600	49	84.1	27,500	53	96.4	27,500	57	109.2	27,500		
80										19	34.4	23,600	32	58.0	23,400	41	74.1	23,100	47	89.1	22,900	51	101.8	22,600		
90													17	35.8	19,800	31	59.9	19,500	39	77.7	19,300	44	93.3	18,900		
100																17	37.5	16,600	30	63.4	16,400	37	80.6	16,100		
110																			16	38.8	14,200	28	66.1	13,800		
120																						15	41.1	12,000		
130																										
140																										
150																										
160	WARNING:												WARNING: MAXIMUM RATING													
170	WHEN BOOM IS EQUIPPED WITH JIB, MAIN HOOK RATING MUST BE REDUCED TO COMPENSATE FOR JIB ATTACHMENT WEIGHT.												FOR 35 FT. 3 SHEAVE TIP IS 150,000 LBS.													
180																										
190	JIB LENGTH			20 FT.	30 FT.	40 FT.	50 FT.	60 FT.																		
200	DEDUCT — LBS.			1,500	1,500	2,000	2,500	3,000																		

# P&H 9125-TC 140-ton Truck Crane 270' boom, 60' jib

with 41,000 lbs. counterweight

... and over rear work areas with outriggers fully extended and set

Oper. Rad. Ft.	130 Ft. Boom			140 Ft. Boom			150 Ft. Boom			160 Ft. Boom			170 Ft. Boom			180 Ft. Boom			190 Ft. Boom			200 Ft. Boom			Oper. Rad. Ft.
	Angle	Boom Pt. El.	Rating Lbs.	Angle	Boom Pt. El.	Rating Lbs.	Angle	Boom Pt. El.	Rating Lbs.	Angle	Boom Pt. El.	Rating Lbs.	Angle	Boom Pt. El.	Rating Lbs.	Angle	Boom Pt. El.	Rating Lbs.	Angle	Boom Pt. El.	Rating Lbs.	Angle	Boom Pt. El.	Rating Lbs.	
12	MAST REQUIRED FOR BOOMS OVER 1																							12	
15																								15	
20																								20	
25																								25	
30																								30	
35	77	135.9	73,600	77	146.0	73,400	78	156.3	73,200														35		
40	74	133.6	60,300	75	143.9	60,000	76	154.1	59,800	77	164.6	59,600	78	174.9	59,300	79	185.3	59,000				40			
45	72	132.1	50,900	73	142.4	50,700	74	152.8	50,500	75	163.1	50,200	76	173.6	50,000	77	184.1	49,800	78	194.3	50,700	79	204.1	50,500	45
50	69	130.1	43,600	71	141.1	43,400	72	151.4	43,200	73	161.6	42,900	74	172.1	42,600	75	182.6	42,400	76	193.0	43,200	77	203.4	43,000	50
60	65	128.6	33,500	67	136.6	33,200	68	147.7	32,900	69	158.0	32,700	71	169.3	32,400	72	179.7	32,200	73	190.2	32,700	74	201.1	32,500	60
70	80	121.2	27,500	62	132.2	27,300	64	143.5	27,000	66	154.6	26,700	67	165.1	26,500	68	177.8	26,300	70	187.1	26,700	71	197.8	26,400	70
80	64	114.0	22,800	57	128.1	22,300	60	138.6	22,000	62	150.1	21,800	64	161.5	21,500	65	171.7	21,300	67	183.6	21,500	68	194.1	21,300	80
90	49	108.6	18,900	52	120.0	18,800	55	131.5	18,300	58	144.2	18,100	60	155.8	17,800	62	167.6	17,600	63	178.1	17,700	65	190.1	17,500	90
100	43	97.1	16,000	47	111.0	15,800	50	124.8	15,500	53	136.3	15,200	56	148.6	14,900	58	161.1	14,700	60	173.1	14,800	61	183.6	14,500	100
110	38	84.9	13,800	41	104.3	13,500	45	114.5	13,200	49	129.3	12,900	52	142.6	12,600	54	154.1	12,400	56	166.2	12,400	58	178.2	12,100	110
120	27	67.4	11,900	34	88.2	11,700	40	104.9	11,300	44	119.7	11,100	47	133.0	10,700	50	146.5	10,600	53	160.2	10,500	55	172.5	10,200	120
130	16	41.7	10,400	28	70.7	10,100	33	90.1	9,800	38	106.8	9,550	42	122.4	9,200	46	138.1	9,050	48	152.0	8,950	51	163.9	8,650	130
140				14	43.7	8,650	25	73.2	8,500	32	93.1	8,250	37	110.9	7,900	41	126.6	7,750	44	142.2	7,600	47	165.0	7,300	140
150							14	44.4	7,400	24	73.4	7,150	31	96.1	6,800	38	114.3	6,650	40	130.5	6,450	43	148.3	6,150	150
160										13	44.1	6,200	24	77.5	5,850	30	98.4	5,700	35	117.5	5,450	39	134.6	5,150	160
170												13	46.3	5,000	23	78.7	4,850	29	102.0	4,600	34	120.3	4,300	170	
180															13	48.6	4,150	22	81.5	3,850	29	105.3	3,550	180	
190																		12	49.4	3,200	22	83.3	2,850	190	
200																					12	49.7	2,250	200	

This chart does not apply for booms equipped with a container tip or hammerhead tip section. Refer to applicable chart for ratings.

Oper. Rad. Ft.	210 Ft. Boom			220 Ft. Boom			230 Ft. Boom			240 Ft. Boom			250 Ft. Boom			Oper. Rad. Ft.	
	Angle	Boom Pt. El.	Rating Lbs.	Angle	Boom Pt. El.	Rating Lbs.	Angle	Boom Pt. El.	Rating Lbs.	Angle	Boom Pt. El.	Rating Lbs.	Angle	Boom Pt. El.	Rating Lbs.		
12	60 FT. LONG AND GANTRY MUST BE IN THE INTERMEDIATE POSITION.														12		
15															15		
20	MIDPOINT SUSPENSION (CENTER HITCH) REQUIRED FOR BOOMS OVER 200 FT. LONG														20		
25															25		
30															30		
35															35		
40	BOOM LENGTHS OVER 200 FT. WITH A 35 FT. TIP SECTION REQUIRES A 2 SHEAVE POINT														40		
45															45		
50	77	213.3	42,600	78	223.7	40,600	79	234.4	38,400							50	
60	75	211.5	32,200	76	222.1	32,100	78	231.7	31,700	77	242.5	31,500	77	252.1	28,100	60	
70	72	208.3	28,200	73	218.8	26,100	73	228.6	25,700	74	239.4	25,500	75	250.1	25,200	70	
80	68	204.7	21,100	70	215.6	20,900	71	226.2	20,900	72	236.6	20,400	73	247.8	20,200	80	
90	66	200.3	17,200	67	211.1	17,000	68	221.8	16,800	69	232.6	16,500	70	243.6	16,300	90	
100	63	198.0	14,300	64	206.2	14,100	65	217.1	13,800	67	229.6	13,500	67	240.0	13,400	100	
110	60	190.3	11,900	61	201.1	11,700	63	213.6	11,400	64	224.4	11,200	65	235.2	11,000	110	
120	57	184.8	10,000	58	195.1	9,800	60	208.0	9,600	61	218.6	9,250	62	229.5	9,050	120	
130	53	178.5	8,400	55	188.8	8,200	57	201.4	7,900	58	212.3	7,650	60	225.1	7,450	130	
140	50	189.3	7,050	52	182.1	6,850	54	194.6	6,600	56	207.6	6,300	57	218.1	6,100	140	
150	48	159.6	5,900	48	174.1	5,700	51	187.4	5,450	53	200.0	5,150	54	212.4	4,950	150	
160	42	150.3	4,950	46	164.6	4,700	47	178.6	4,450	50	192.5	4,150	52	205.6	3,950	160	
170	36	137.8	4,050	41	154.1	3,800	44	168.5	3,550	46	182.1	3,300	49	197.0	3,050	170	
180	33	124.2	3,300	37	141.8	3,050	40	156.3	2,800	43	172.1	2,550	45	187.2	2,500	180	
190	26	107.0	2,650	33	127.3	2,400	36	146.0	2,150							190	
200	21	85.5	2,050														200

NOTE: OPERATION OF THIS EQUIPMENT IN EXCESS OF LOAD RATINGS AND DISREGARD OF INSTRUCTIONS VOIDS THE WARRANTY.

# P&H 9125-TC 140-ton Truck Crane 270' boom, 60' jib

## 2 rated crane loads in pounds — main boom — without outriggers . . . . .

Oper Rad Ft	Angle	50 Ft. Boom		Angle	60 Ft. Boom		Angle	70 Ft. Boom		Angle	80 Ft. Boom		Angle	90 Ft. Boom		Angle	100 Ft. Boom	
		Over Side	Over Rear		Over Side	Over Rear		Over Side	Over Rear		Over Side	Over Rear		Over Side	Over Rear		Over Side	Over Rear
12	81		75,228															
15	78		63,984	80		63,234												
20	72	41,652	50,844	75	40,994	50,156	77	40,643	49,787									
25	66	33,689	41,876	70	33,068	41,229	73	32,738	40,884	75	32,384	40,516	77	31,763	39,869	78	31,392	39,485
30	60	28,066	34,300	65	27,471	34,764	69	27,156	34,437	71	26,817	34,085	73	26,222	33,468	75	25,803	33,098
35	53	23,885	28,100	59	23,309	28,800	64	23,005	28,700	67	22,677	28,500	70	22,102	28,200	72	21,751	27,900
40	45	20,654	23,700	54	20,094	24,400	59	19,798	24,200	64	19,478	24,000	67	18,917	23,700	69	18,575	23,400
45	36	18,083	20,200	47	17,535	20,900	55	17,246	20,800	59	16,933	20,600	63	16,385	20,300	66	16,047	20,000
50	24	15,700	17,600	40	15,451	18,300	49	15,167	18,100	55	14,860	17,900	60	14,321	17,600	63	13,988	17,300
60				22	12,260	14,300	37											
70							20	9,664	11,400	35	9,371	11,100	43	8,858	10,800	49	8,536	10,500
80										19	7,608	9,100	32	7,103	8,800	41	6,785	8,500
90													17	5,722	7,250	31	5,407	6,900
100																17	4,295	5,700

WHEN USING BOOMS WITH A 25 FT TIP SECTION, 60 FT TO 130 FT LONG DEDUCT 1,000 LBS

## . . . . tires at 100 p.s.i.

Oper. Rad. Ft.	Angle	110 Ft. Boom		Angle	120 Ft. Boom		Angle	130 Ft. Boom	
		Over Side	Over Rear		Over Side	Over Rear		Over Side	Over Rear
12		RATINGS SHOWN DO NOT EXCEED MAXIMUM APPROVED TIRE CAPACITY							
15									
20									
25									
30	77	25,268	32,480	78	25,126	32,335			
35	74	21,178	27,800	75	21,037	27,200	77	20,664	27,100
40	71	18,014	23,100	73	17,877	22,700	74	17,512	22,600
45	68	15,498	19,600	70	15,363	19,300	72	15,004	19,100
50	65	13,449	16,900	68	13,315	16,600	69	12,960	16,400
60	60	10,312	13,000	62	10,180	12,600	65	9,832	12,500
70	53	8,023	10,200	57	7,893	9,850	60	7,551	9,700
80	47	6,280	8,150	51	6,152	7,800	54	5,813	7,650
90	39	4,909	6,550	44	4,781	6,250	49	4,445	6,050
100	30	3,801	5,350	37	3,674	5,000	43	3,341	4,800

\*Maximum travel speed with lifted load is 1.5 m.p.h.

32R202A

special over rear on rubber with 41,000 lbs. counterweight and 14,000 lbs. front bumper counterweight\*

## 3 rated crane loads in pounds — main boom — over rear — without outriggers

OPER. RAD. FT.	ANGLE	50 FT. BOOM		ANGLE	60 FT. BOOM		ANGLE	70 FT. BOOM		ANGLE	80 FT. BOOM		ANGLE	90 FT. BOOM		ANGLE	100 FT. BOOM		OPER. RAD. FT.
		BOOM PT. EL.	RATING LBS.		BOOM PT. EL.	RATING LBS.		BOOM PT. EL.	RATING LBS.		BOOM PT. EL.	RATING LBS.		BOOM PT. EL.	RATING LBS.		BOOM PT. EL.	RATING LBS.	
12	81	58.0	110,000																12
13	80	57.8	107,400																13
15	78	57.5	96,800	80	67.6	96,200													15
17	78	57.1	83,700	78	67.3	83,100	80	77.5	82,800										17
20	72	56.2	68,400	75	66.5	68,800	77	76.6	68,500	79	87.1	68,100	80	97.2	67,500				20
25	66	54.3	53,700	70	65.1	53,100	73	75.6	52,800	75	85.8	52,400	77	96.3	51,800	78	106.5	51,500	25
30	60	52.0	43,500	65	63.1	42,900	69	74.1	42,600	71	84.2	42,200	73	94.6	41,700	75	104.2	41,400	30
35	53	48.6	36,300	58	60.1	35,800	64	71.6	35,500	67	82.2	35,100	70	83.1	34,600	72	103.8	34,200	35
40	45	44.0	31,100	54	57.1	30,500	59	66.6	30,200	64	80.6	29,900	67	91.5	29,300	69	102.1	29,000	40
45	36	37.8	27,000	47	52.5	26,400	55	66.0	26,100	59	77.2	25,800	63	88.8	25,300	66	100.1	24,900	45

37U940

# P&H 9125-TC 140-ton Truck Crane 270' boom, 60' jib

## PCSA CLASS 12-749

4 rated crane loads in pounds — main boom (69" w. x 69" d.) in over side . . .

Oper. Rad. Ft.	Angle	50 Ft. Boom		60 Ft. Boom		70 Ft. Boom		80 Ft. Boom		90 Ft. Boom		100 Ft. Boom		110 Ft. Boom		120 Ft. Boom		Oper. Rad. Ft.				
		Boom Pt. El.	Rating Lbs.	Boom Pt. El.	Rating Lbs.	Boom Pt. El.	Rating Lbs.	Boom Pt. El.	Rating Lbs.	Boom Pt. El.	Rating Lbs.	Boom Pt. El.	Rating Lbs.	Boom Pt. El.	Rating Lbs.	Boom Pt. El.	Rating Lbs.					
12	81	58.0	280,000															12				
15	78	67.5	220,800	80	67.8	198,000												15				
20	72	66.2	174,300	75	66.8	174,000	77	76.8	168,500									20				
25	68	64.3	138,360	70	65.1	137,800	73	75.6	137,600	75	85.8	137,300	77	96.3	136,800	78	106.5	132,200	25			
30	60	52.0	114,400	65	63.1	114,700	69	74.1	114,600	71	84.2	114,500	73	94.6	114,300	75	104.2	114,100	30			
35	53	48.8	90,700	59	60.1	91,000	64	71.5	90,800	67	82.2	90,700	70	93.1	90,500	72	103.8	90,300	35			
40	45	44.0	74,900	54	57.1	75,200	59	68.6	75,000	64	80.6	74,900	67	91.5	74,700	69	102.1	74,500	40			
45	38	37.0	63,600	47	52.5	63,800	55	66.0	63,600	59	77.2	63,400	63	88.8	63,300	66	100.1	63,000	45			
50	24	28.0	55,100	40	48.2	55,400	49	61.4	55,100	55	74.1	55,000	60	86.6	54,800	63	97.7	54,600	50			
60				22	30.9	43,400	37	50.6	43,100	46	66.1	43,000	52	79.6	42,800	56	91.5	42,500	60			
70							20	33.4	35,100	35	54.4	35,000	43	70.0	34,800	49	84.1	34,500	70			
80										19	34.4	29,200	32	58.0	29,000	41	74.1	28,700	80			
80												17	35.8	25,200	31	59.9	24,900	39	77.7	24,700	90	
100													17	37.5	21,400	30	63.4	21,200	37	80.8	20,900	100
110															16	38.8	18,500	28	66.1	18,100	110	
120																	15	41.1	15,900	120		
130																			130			
140																			140			
150																			150			
160																			160			
170																			170			
180																			180			
190																			190			
200																			200			

RATINGS LISTED FOR BOOMS 60 FT. AND LONGER ARE BASED ON THE USE OF A 35 FT. TIP SECTION. WHEN USING BOOMS WITH 25 FT. SECTION, 80 FT. TO 250 FT. LONG, RATINGS BELOW HEAVY LINE AND GREATER THAN 25 FT. OPERATING RADIUS, DEDUCT 1000 LBS.

WARNING: MAXIMUM RATING FOR 35 FT. 3 SHEAVE TIP IS 150,000 LBS.

WARNING: WHEN BOOM IS EQUIPPED WITH JIB, MAIN HOOK RATING MUST BE REDUCED TO COMPENSATE FOR JIB ATTACHMENT WEIGHT.

JIB LENGTH	20 FT.	30 FT.	40 FT.	50 FT.	60 FT.
DEDUCT — LBS.	1,500	1,500	2,000	2,500	3,000

WARNING: Machine will tip over when upper is revolved over side unless outriggers are fully extended and set.

## PCSA CLASS 12-834

5 rated crane loads in pounds — main boom (69" w. x 69" d.) in . . . . .

OPER. RAD. FT.	ANGLE	50 FT. BOOM		60 FT. BOOM		70 FT. BOOM		80 FT. BOOM		90 FT. BOOM		100 FT. BOOM		110 FT. BOOM		OPER. RAD. FT.					
		BOOM PT. EL.	RATING LBS.	BOOM PT. EL.	RATING LBS.	BOOM PT. EL.	RATING LBS.	BOOM PT. EL.	RATING LBS.	BOOM PT. EL.	RATING LBS.	BOOM PT. EL.	RATING LBS.	BOOM PT. EL.	RATING LBS.						
12	82	58.2	280000													12					
15	72	57.7	220800	81	67.8	198000										15					
20	73	56.5	174300	79	68.8	174000	78	77.1	168500							20					
25	66	54.8	138360	71	65.4	137900	73	75.6	137800	76	86.2	137300	77	96.5	136800	79	106.7	132200	25		
30	60	52.1	115000	65	63.4	114700	69	74.2	114600	72	84.8	114500	74	95.2	114300	76	105.6	114100	30		
35	53	48.8	98000	60	60.8	97500	65	72.1	97000	68	83.0	96500	71	93.8	96000	73	104.2	95500	35		
40	45	44.4	83400	54	57.5	83100	60	69.4	83000	64	80.8	82900	67	91.7	82800	70	102.5	82400	40		
45	38	38.5	70900	48	53.5	70800	55	63.3	70400	60	78.1	70300	64	89.4	70000	66	100.5	69800	45		
50	25	29.7	61500	41	49.3	61200	50	62.4	61000	58	75.0	60900	60	85.8	60600	63	96.1	60300	50		
60				23	31.7	48100	38	51.8	47900	48	66.8	47800	55	80.0	47500	57	92.3	47200	60		
70							21	33.5	39100	35	55.1	39000	44	70.9	38600	49	84.7	38400	70		
80									20	35.3	32700	33	58.1	32300	41	74.8	32100	47	88.2	31700	80
90										20	38.8	27600	33	62.6	27600	40	79.8	27500	90		
100												19	41.5	24100	31	65.4	23800	40	83.1	23700	100
110														18	43.1	20800				110	
120																			120		

WARNING: WHEN BOOM IS EQUIPPED WITH JIB, MAIN HOOK RATING MUST BE REDUCED TO COMPENSATE FOR JIB ATTACHMENT WEIGHT.

# P&H 9125-TC 140-ton Truck Crane 270' boom, 60' jib

## with 62,000 lbs. counterweight

(ratings shown are based on a counterweight of 41,000 lbs. and 21,000 lbs. bustle counterweight)

... and over rear work areas with outriggers fully extended and set

Oper. Rad. Ft.	130 Ft. Boom		140 Ft. Boom		150 Ft. Boom		160 Ft. Boom		170 Ft. Boom		180 Ft. Boom		190 Ft. Boom		200 Ft. Boom		Oper. Rad. Ft.								
	Angle	Boom Pt. El. Rating Lbs.	Angle	Boom Pt. El. Rating Lbs.	Angle	Boom Pt. El. Rating Lbs.	Angle	Boom Pt. El. Rating Lbs.	Angle	Boom Pt. El. Rating Lbs.	Angle	Boom Pt. El. Rating Lbs.	Angle	Boom Pt. El. Rating Lbs.	Angle	Boom Pt. El. Rating Lbs.									
12																	12								
15																	15								
20																	20								
25																	25								
30																	30								
35	77	135.3	89,700	77	145.0	86,400	78	155.3	78,800								35								
40	74	133.6	73,800	75	143.9	73,600	76	154.1	73,400	77	164.6	69,400	78	174.9	64,100	79	185.3	61,300	40						
45	72	132.1	62,400	73	142.4	62,100	74	152.8	61,900	75	163.1	61,600	76	173.6	60,800	77	184.1	56,400	78	194.3	58,400	79	204.1	51,500	45
50	69	130.1	54,000	71	141.1	53,700	72	151.4	53,600	73	161.8	53,200	74	172.1	53,000	75	182.6	52,300	76	193.0	53,500	77	203.4	49,900	50
55	65	126.5	41,900	67	136.6	41,700	68	147.7	41,400	69	158.0	41,100	71	169.3	40,800	72	179.7	40,600	73	190.2	41,100	74	201.1	40,800	60
60	60	121.2	33,900	62	132.2	33,800	64	143.5	33,300	66	154.6	33,000	67	165.1	32,700	69	177.6	32,500	70	187.1	32,800	71	197.8	32,500	70
65	54	114.0	28,000	57	126.1	27,400	60	138.6	27,400	62	150.1	27,400	64	161.5	27,300	65	171.7	27,300	67	183.6	27,300	68	194.1	27,300	80
70	49	106.6	24,300	52	120.0	24,000	55	131.5	23,700	58	144.2	23,500	60	155.8	23,200	62	167.6	23,000	63	178.1	23,100	65	190.1	22,900	90
75	43	97.1	20,800	47	111.0	20,600	50	124.8	20,300	53	138.3	20,000	56	149.8	19,700	58	161.1	19,500	60	173.1	19,600	61	183.8	19,300	100
80	38	84.9	18,100	41	104.3	17,800	45	114.5	17,500	49	129.3	17,200	52	142.8	16,900	54	154.1	16,800	56	166.2	16,700	58	178.2	16,400	110
85	27	67.4	15,800	34	88.2	15,800	40	104.9	15,200	44	119.7	15,000	47	133.0	14,700	50	146.5	14,500	53	160.2	14,400	55	172.5	14,100	120
90	15	41.7	14,000	26	70.7	13,700	33	90.1	13,400	38	106.8	13,100	42	122.4	12,800	46	138.1	12,600	49	152.0	12,500	51	163.9	12,200	130
95				14	43.7	12,200	25	73.2	11,800	32	93.1	11,500	37	110.9	11,200	41	126.6	11,000	44	142.2	10,900	47	155.0	10,600	140
100							14	44.4	10,500	24	73.4	10,200	31	96.1	9,850	36	114.3	9,700	40	130.5	9,500	43	146.3	9,200	150
105										13	44.1	9,050	24	77.5	8,700	30	98.4	8,550	35	117.5	8,300	39	134.5	8,000	160
110													13	46.3	7,700	23	78.7	7,550	29	102.0	7,300	34	120.3	6,950	170
115																									180
120																									180
125																									190
130																									200

32R201

## with 62,000 lbs. counterweight and 14,000 lbs. front bumper counterweight

Maximum approved travel speed with 14,000 pound front bumper counterweight installed is 5 m.p.h.

... over rear work areas with outriggers fully extended and set

ANGLE	120 FT. BOOM		130 FT. BOOM		140 FT. BOOM		150 FT. BOOM		160 FT. BOOM		170 FT. BOOM		180 FT. BOOM		OPER. FT.											
	BOOM PT. EL.	RATING LBS.	BOOM PT. EL.	RATING LBS.	BOOM PT. EL.	RATING LBS.	BOOM PT. EL.	RATING LBS.	BOOM PT. EL.	RATING LBS.	BOOM PT. EL.	RATING LBS.	BOOM PT. EL.	RATING LBS.												
78	126.1	105600													12											
78	124.9	94500	77	135.2	92100	78	145.5	85400	79	155.7	77800				15											
73	125.8	81900	74	134.0	81700	76	144.3	80600	77	154.6	74100	77	164.9	68400	78	175.1	63100	79	185.3	60300	40					
71	121.9	69000	72	132.5	69400	73	142.9	68800	75	153.3	68500	76	163.7	65800	77	174.0	58900	77	184.2	54400	45					
68	120.0	58800	70	130.8	60600	71	141.4	58300	73	151.9	59000	74	162.0	58700	75	172.7	57400	76	183.0	51200	50					
63	115.5	46800	65	126.8	48500	67	137.8	46300	69	148.4	46000	70	159.0	43700	71	169.8	45500	72	180.2	43200	60					
57	109.7	31900	60	121.4	37700	62	132.8	37400	64	144.0	37100	66	155.0	36800	68	165.9	36600	69	176.7	36300	70					
51	102.5	31600	55	115.0	31400	58	127.0	31000	60	138.7	30800	62	150.2	30400	64	161.4	30200	65	172.4	29900	80					
46	94.4	21500	50	108.0	27200	53	120.6	26900	56	133.1	26700	58	145.0	26400	60	156.6	26200	62	168.0	25800	90					
38	83.1	23700	44	96.5	23500	48	112.5	23100	51	125.7	22900	54	138.3	22600	56	150.5	22400	58	162.3	22100	100					
30	68.1	22700	37	88.5	20400	42	102.3	20100	46	116.0	19900	49	130.3	19500	52	143.3	19300	55	155.7	19100	110					
18	44.8	13200	28	70.5	18000	35	89.7	17600	40	105.1	17400	45	120.9	17000	48	134.8	16900	51	148.1	16600	120					
																									130	
																										140
																										150
																										160
																										170
																										180

32R254

# P&H 9125-TC 140-ton Truck Crane 270' boom, 60' jib

This chart does not apply for booms equipped with a container tip or hammerhead tip section. Refer to applicable chart for ratings.

Oper. Rad. Ft.	210 Ft. Boom		220 Ft. Boom		230 Ft. Boom		240 Ft. Boom		250 Ft. Boom		260 Ft. Boom		270 Ft. Boom		Oper. Rad. Ft.															
	A. Pt. El.	Rating Lbs.	A. Pt. El.	Rating Lbs.	A. Pt. El.	Rating Lbs.	A. Pt. El.	Rating Lbs.	A. Pt. El.	Rating Lbs.	A. Pt. El.	Rating Lbs.	A. Pt. El.	Rating Lbs.																
12															12															
15															15															
20	MIDPOINT SUSPENSION (CENTER HITCH) REQUIRED FOR BOOMS OVER 200 FT. LONG.														20															
25															25															
30			MAXIMUM BOOM LENGTH WITH A 25 FT. TIP SECTION IS 250 FT.								USE 35 FT. TIP SECTION				30															
35															35															
40	BOOM LENGTHS OVER 200 FT. WITH A 35 FT. TIP SECTION REQUIRES A 2 SHEAVE POINT.														40															
45															45															
50	77	213.3	45,700	78	223.7	40,600	79	234.4	38,400	77	242.5	31,600	77	252.1	26,100	78	262.8	24,300											50	
60	75	211.5	40,600	76	222.1	39,400	76	231.7	35,300	77	242.5	31,600	77	252.1	26,100	78	262.8	24,300											60	
70	72	208.3	32,300	73	218.8	32,100	73	228.6	31,800	74	239.4	30,500	75	250.1	25,200	76	260.6	23,500	76	270.6	20,300									70
80	69	204.7	27,200	70	215.5	27,100	71	226.2	26,900	72	236.6	26,600	73	247.6	24,300	73	257.4	22,600	74	268.1	19,400									80
90	66	200.3	22,600	67	211.1	22,500	68	221.8	22,200	69	232.6	21,900	70	243.6	21,800	71	254.6	21,500	72	265.4	18,700									90
100	63	196.0	19,100	64	206.2	18,900	65	217.1	18,800	67	229.6	18,300	67	240.0	18,200	68	249.6	17,900	69	261.1	17,600									100
110	60	190.3	16,200	61	201.1	16,000	63	213.6	15,700	64	224.4	15,500	65	235.2	15,300	66	245.8	15,000	67	257.1	14,700									110
120	57	184.8	13,900	58	195.1	13,700	60	208.0	13,400	61	218.6	13,200	62	229.5	13,000	64	242.6	12,700	65	253.5	12,400									120
130	53	178.5	12,000	55	188.8	11,800	57	201.4	11,500	58	212.3	11,200	60	225.1	11,000	61	236.1	10,700	62	247.1	10,400									130
140	50	169.3	10,400	52	182.1	10,100	54	194.6	9,900	56	207.6	9,800	57	218.1	9,400	59	231.6	9,100	60	242.6	8,800									140
150	48	159.5	9,000	48	174.1	8,750	51	187.4	8,500	53	200.0	8,200	54	212.4	8,000	56	224.1	7,700	57	235.6	7,400									150
160	42	150.3	7,800	45	164.6	7,550	47	178.6	7,300	50	192.5	7,000	52	205.6	6,800	53	216.1	6,500	55	229.6	6,200									160
170	38	137.8	6,750	41	154.1	6,500	44	168.5	6,250	46	182.1	6,000	49	197.0	5,750	50	207.5	5,450	52	221.6	5,150									170
180	33	124.2	5,850	37	141.6	5,550	40	156.3	5,300	43	172.1	5,050	45	187.2	4,800	47	197.5	4,550	50	215.2	4,200									180
190	28	107.0	5,000	33	127.3	4,750	36	145.0	4,500	39	161.4	4,250	42	175.8	4,000	44	189.1	3,700	47	206.3	3,400									190
200	21	85.5	4,300	27	109.8	4,050	31	130.2	3,800	35	148.3	3,500	39	165.8	3,250	41	175.5	3,000	44	198.4	2,850									200

32R201

**WARNING:** When assembling boom inserts, do not cantilever more than 60 ft. of inserts past point of pendant rope attachment to boom. Relocate point of attachment out on boom as additional inserts are added.

25 FT. TIP SECTION								
BOOM LENGTH FT.	BOOM MAKE-UP ARRANGEMENT CHART	APPROX. INSERT LENGTHS FT.	BOOM LENGTH FT.	APPROXIMATE MID-POINT CONNECTION UP BOOM FROM BOOM FOOT PIN				
				ADJUST 90BT116 MID-POINT ROPE LENGTH $C_1$ TO $C_2$ PIN, TO		*MID-POINT DEFLECTION RANGE (MIN. and MAX.)		
				FT.	FT.	FT.	INCHES	BOOM MAKE-UP ARRANGEMENT
100	Base - B - C - Tip							
110	Base - A - B - C - Tip							
120	Base - B - D - Tip	Base-25	210	105	78-2	10.5 to 13.5		Base - A - B - D - C - D - Tip
130	Base - C - D - Tip		220	115	89-0	10.75 to 14.25		Base - B - B - D - C - D - Tip
140	Base - A - C - D - Tip	A-10	230	125	98-6	11.5 to 15.0		Base - D - D - C - D - Tip
150	Base - B - C - D - Tip	B-20	240	115	89-0	11.75 to 15.5		Base - A - C - D - D - D - Tip
160	Base - A - B - C - D - Tip		250	125	99-0	12.25 to 16.0		Base - B - C - D - D - D - Tip
170	Base - B - D - D - Tip	C-30						
180	Base - C - D - D - Tip	D-50						
190	Base - A - C - D - D - Tip							
200	Base - B - C - D - D - Tip	Tip-25						

\*When erecting boom, adjust mid-point turnbuckles to limit mid-point deflection within specified mid-point deflection range.